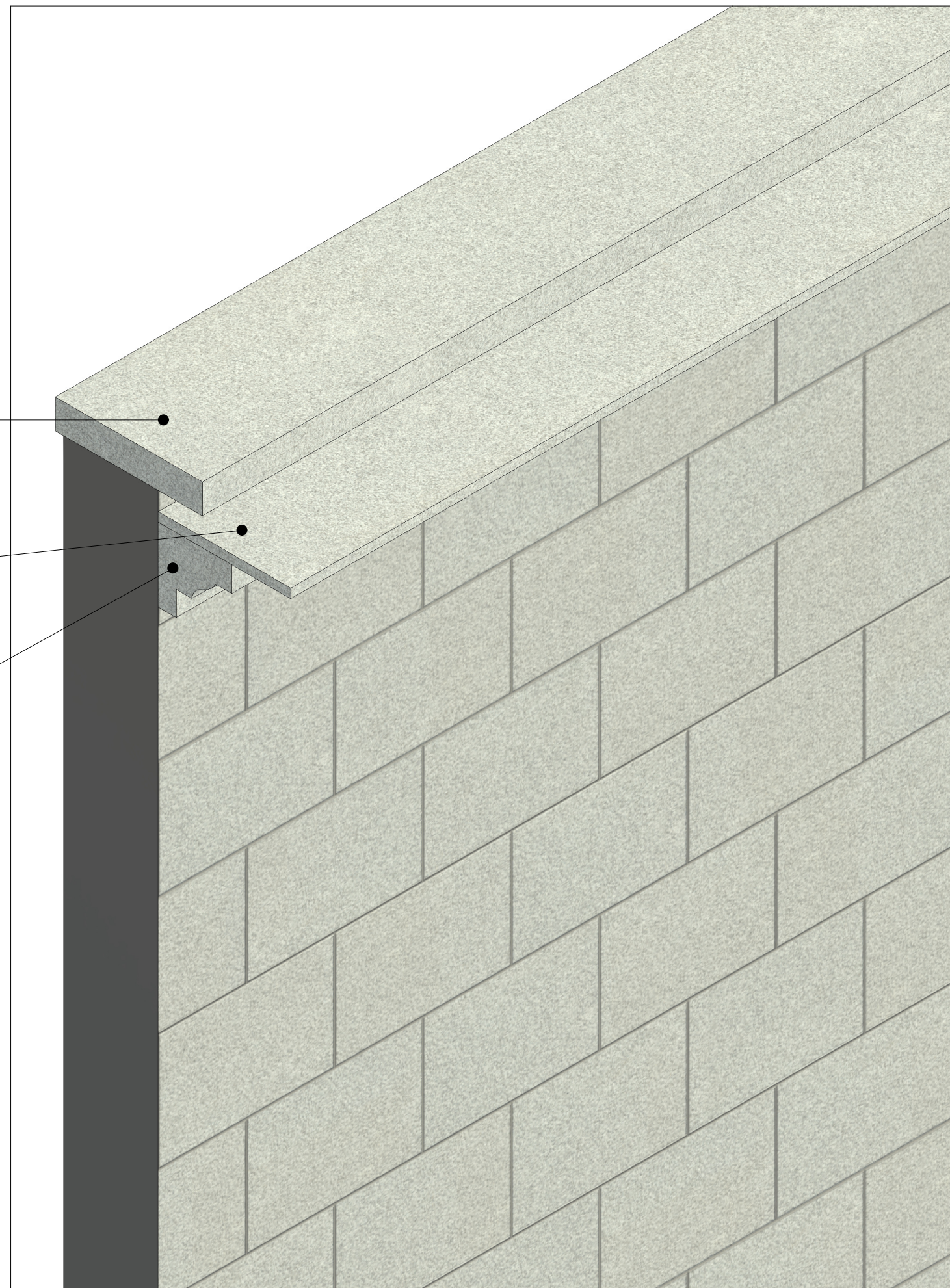


WALL CAP - 18" x 4"  
BARRE GRAY™ GRANITE  
(WALL SWEEP FEATURE)

SOFFIT - 18" x 1 1/4"  
BARRE GRAY™ GRANITE  
(WALL SWEEP FEATURE)

CORNICE - 10" x 10"  
BARRE GRAY™ GRANITE  
(WALL SWEEP FEATURE)

CONTACT POLYCOR FOR  
AVAILABLE MAXIMUM SIZE



NATURAL STONE CLADDING - CFR PANEL - 16x24  
BARRE GRAY™ GRANITE

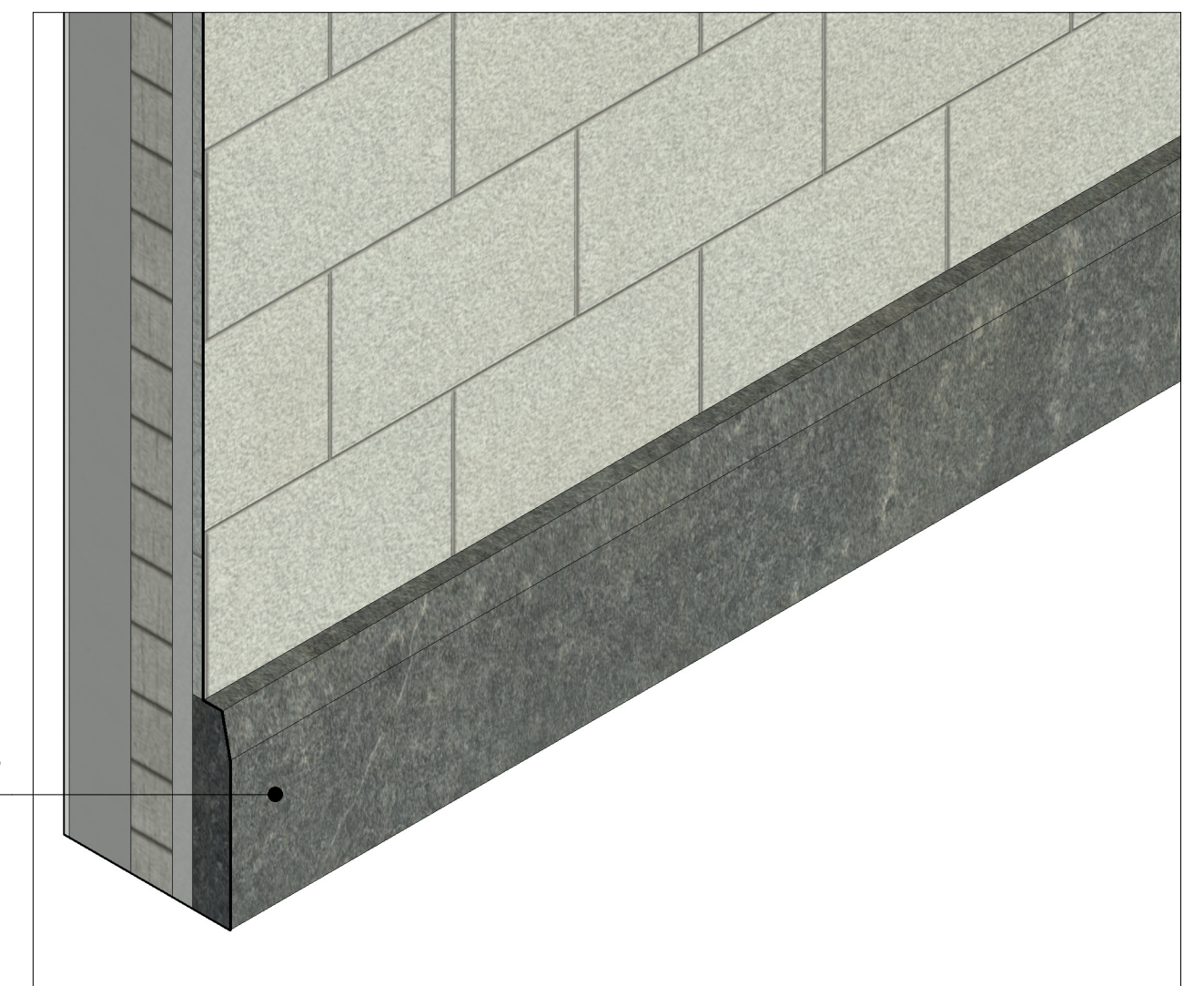
WALL BASE - 60" x 18" X 5 5/8"  
SAINT HENRY BLACK™ GRANITE  
(WALL SWEEP FEATURE)

CONTACT POLYCOR FOR  
AVAILABLE MAXIMUM SIZE



WALL BASE - 60" x 18" X 3 5/8"  
SAINT HENRY BLACK™ GRANITE  
(WALL SWEEP FEATURE)

CONTACT POLYCOR FOR  
AVAILABLE MAXIMUM SIZE



**REVIT MODEL NOTES:**

Wall Cap: Polycor stone product is applied as a Sweep feature within the Wall System structure using a Revit Profile depicting the width and thickness of the stone cap.

Cornice and Soffit: Polycor stone product is applied as a Wall Sweep Family to a wall. A Revit Profile is used to represent the profile of the cornice or soffit.

Wall Base: Polycor stone product is applied as a Sweep feature within the Wall System structure using a Revit Profile depicting the height and thickness of the wall base.

